

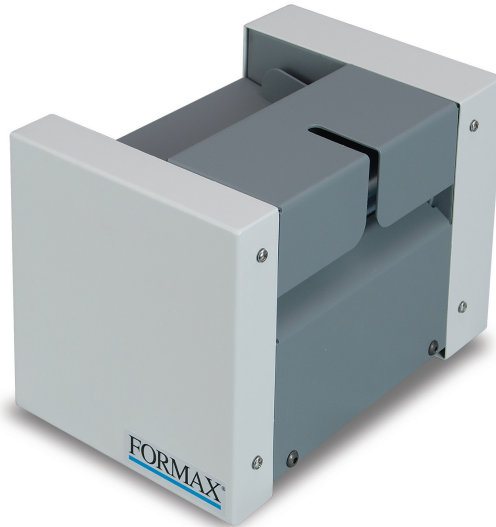
# FORMAX<sup>®</sup>

---

FD 1000  
Hand-Feed Pressure Sealer



# SPECIFICATIONS



The FD 1000 Hand-Feed Pressure Sealer provides a user-friendly solution for processing single pressure seal forms. Specially designed for one-off forms, re-runs and as a backup for primary pressure sealers, it's easy to use. No adjustments are required: simply feed the form into the FD 1000 to create a secure, mail-ready piece, without the need for envelopes.

The FD 1000 can process a variety of pressure seal forms, with folded dimensions up to 5 1/2" wide.

|                 |  |
|-----------------|--|
| Hopper Capacity | Single folded form   |
| Speed:          | Up to 24 pre-folded forms per minute, based on 8 1/2" form width |
| Form size:      | Up to 5 1/2" wide (folded dimensions)                            |
| Fold settings:  | Pre-folded by hand   |
| Power:          | 110V, 60Hz   |
| Dimensions:     | 9.5" L x 6.25" W x 6.75" H (241 L x 159 W x 171 H mm)            |
| Weight:         | 25 lbs (11 kg)   |

Made in the USA

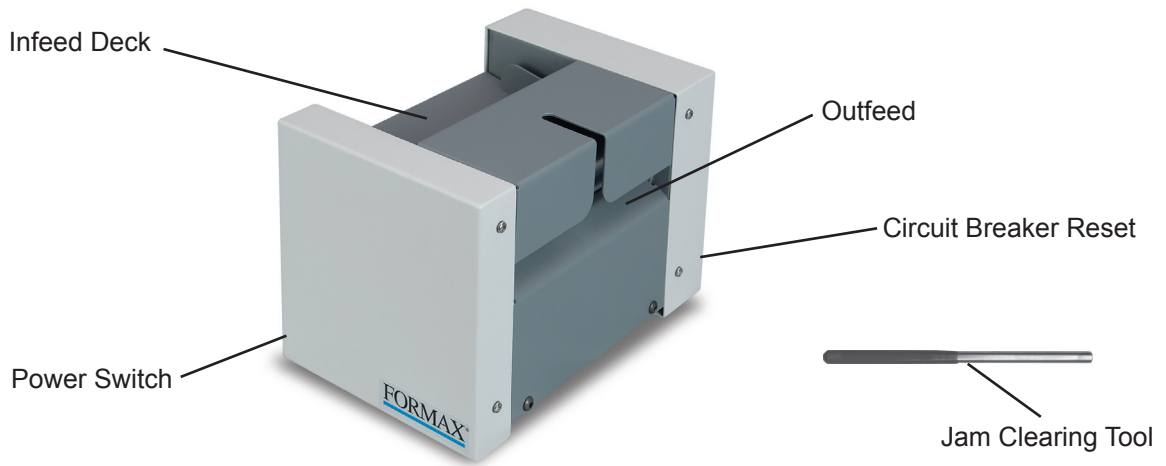
## UNPACKING & SETUP

Check package for shipping damage. If there is shipping damage, do not discard the box.

**CAUTION:** The FD 1000 is compact, but heavy. Use care when removing from the box.

1. Remove any packing material from the machine.
2. Plug cord into wall outlet.

# OPERATION



1. Turn machine on by flipping the power switch on the infeed side. The seal rollers will begin to rotate.
2. Fold the pressure seal form, ensuring that it's folded correctly and no glue lines are exposed (fig. 1).
3. Insert into the infeed deck (fig. 2). The FD 1000 seal rollers will automatically draw in the form and seal it.
4. Remove the sealed form.

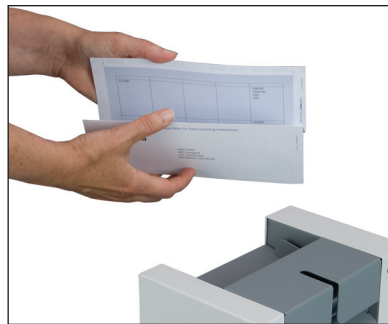


Fig. 1

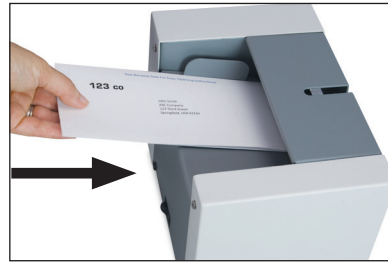


Fig. 2

## CLEARING A MISFED FORM

If a form does not feed and becomes jammed in the rollers, turn OFF the power and pull the form back out.

If the form is not removed within 15 seconds, the circuit breaker will automatically trip, shutting the sealer down. In this case, turn off the machine and wait 60 seconds before attempting to restart the sealer. Press the circuit breaker reset button (fig. 3), turn ON the power switch and resume processing forms.

In the event the form is severely jammed, use the jam clearing tool to remove it. First, turn OFF the power switch. Insert the jam clearing tool into one of the holes of the metal seal roller, then rotate the rollers to back the form out through the infeed (fig. 4). Switch the power on and resume processing forms.

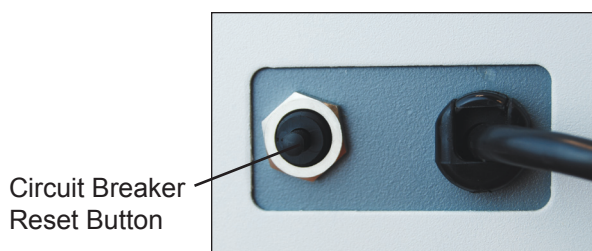


Fig. 3

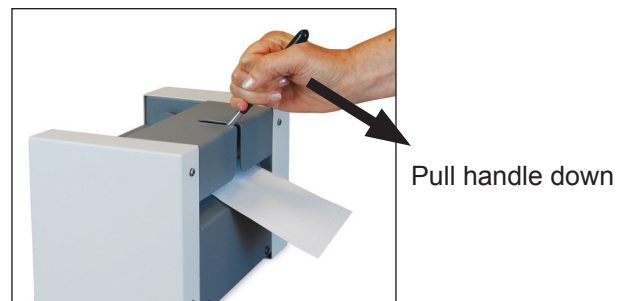


Fig. 4