

Akiles CoilMac ECP41-Plus Electric Coil Punch Machine

Product Spec Sheet



Provided by

MyBinding.com

When Image Matters.

Call Us at 1-800-944-4573



CoilMac-ECP

[ELECTRIC COIL PUNCH EQUIPMENT]

Heavy Duty Electric Coil Punch Machine (AVAILABLE IN 2 VERSIONS)

**Upgradeable
With Our
Finish@Coil
Electric Inserters!**



**CoilMac-ECP41
(STANDARD)**



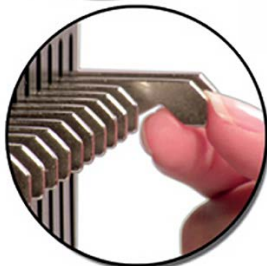
**CoilMac-ECP41+
(PLUS)**



Available with Oval Holes
These special oval-shaped holes will improve your coil binding speed by as much as 50% (Plus version only).



Finish@Coil Compatible
Included mounts allow for a Finish@Coil-M or E1 to be securely mounted on top of the CoilMac-ECP41 or ECP41+ (Sold separately).



Fully Disengageable Pins
All 54 pins can be independently pulled & disengaged, for a clean & professional punch of any paper size (Plus version only).



Heavy Duty Motor
Single punches up to 25 sheets of 20 lbs paper.

AKILES *CoilMac-ECP* [ELECTRIC COIL PUNCH EQUIPMENT]

With its heavy-duty punch motor and complete system of functions, the Akiles CoilMac-ECP makes coil binding fast, easy, convenient and professional, while giving you the flexibility to upgrade to our **Finish@Coil** electric inserters.

Die Disengagement Pins
For a clean and professional punch with different paper sizes.

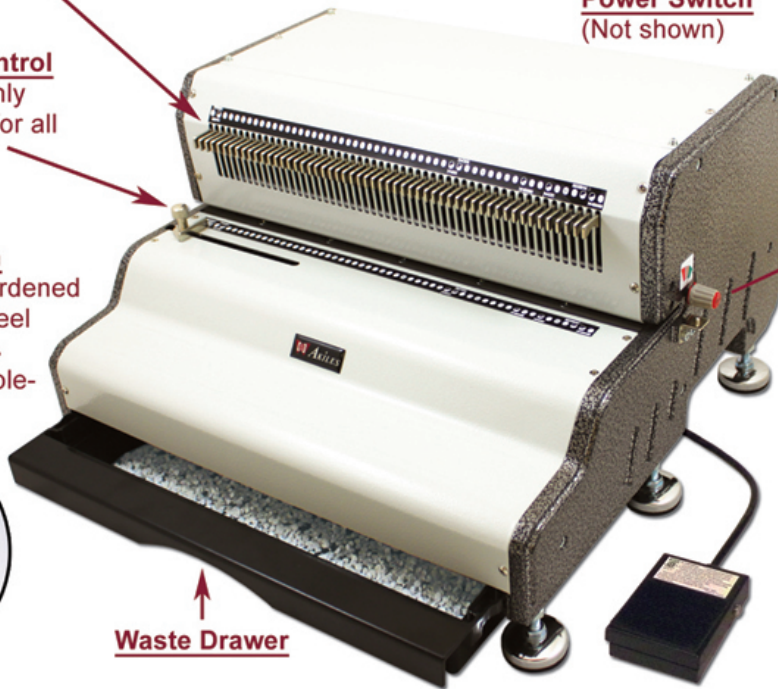
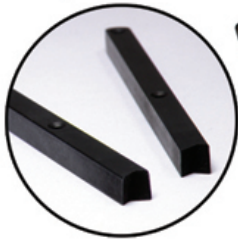
Reverse (Anti-Jam) Function
For trouble free punching.
(Not shown)

Depth Margin Control
4 settings provide the perfect punch margin depth for different coil sizes.

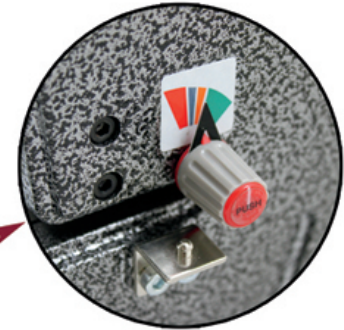
Side Margin Control
Provides an evenly centered punch for all document sizes.

Power Switch
(Not shown)

Hardened Punch Die System
Individually cast-hardened and heat-treated steel punch dies ensures many years of trouble-free operation.



Waste Drawer



Open Punching Throat & Continuous Punching Guide
For easy alignment & punching of longer documents up to 26".



FREE: Coil Crimpers & Coil Selector



Foot Pedal Operation
Allows the free use of both hands, granting the operator complete control of punching & inserting.

50mm Binding Capacity
When upgraded with a **Finish@Coil-M** or **E1** Electric Coil Inserter.

Model	CoilMac-ECP41	CoilMac-ECP41+
Punching Operation	Electric	
Pitch	Standard 4:1 (0.25")	Letter 4:1 (0.248")
Hole Size	Round (4mm)	Oval (4mm x 5mm)
Disengagable Dies	5 out of 53	All 54
Punching Length	13.5" (53 holes)	13.5" (54 holes)
Punching Capacity	Up to 25 sheets (20 lbs paper)	
Finish@Coil Mounting Bracket	Compatible with Finish@Coil-M or E1	
Binding Capacity	Up to 2" (with Finish@Coil-M or E1)	
Weight & Volume	60 lbs & 4.33 CbFt	
Warranty	1 Year	

AUTHORIZED DEALER:

