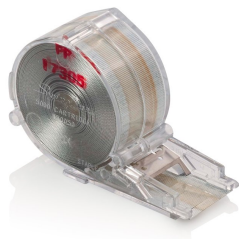


Swingline® Standard Staple Cartridge, 5,000 Staple Count, 1/4" Leg Length

S7050050



PRODUCT DESCRIPTION

Staple up to 5,000 times without reloading.

FEATURES

- Easy to insert
- Sharp chisel point staples through more sheets with less jamming
- 1/4" leg length
- 5,000 staples per cartridge, 1 cartridge per box
- For use with up to 30 sheet capacity Swingline cartridge staplers

SPECIFICATIONS

Performance Guarantee Yes
Sheet Capacity (20 lb paper) 30
Staple Capacity 5,000
Staple Leg Length 1/4"
Warranty None

ADDITIONAL INFORMATION

Country of manufacture Sweden
Minimum Order Quantity 24
Warranty Period None
Lowest possible unit Case
Moore # 50050B

INNER

Depth	3"
Width	7.3"
Height	4"
Gross weight	4.79lbs
UPC#	30074711500501
Unit quantity	12
Cases/Layer	33
Layers/Pallet	4

CASE

Depth	8"
Width	6.6"
Height	4.3"
Gross weight	9.55lbs
UPC#	50074711500505
Unit quantity	24
Cases/Layer	33
Layers/Pallet	4

PALLET

Depth	47.24"
Width	39.37"
Height	23.31"
Gross weight	1273.14lbs
UPC#	70074711500509
Unit quantity	3168
Cases/Layer	33
Layers/Pallet	4

EACH

Depth	3.15"
Width	1.8"
Height	1.1"
Gross weight	0.39lbs
UPC#	074711500500
Unit quantity	1
Cases/Layer	33
Layers/Pallet	4